

"Navira" pathway luminaire, is an innovative design options to provide visual integration with the environment. Aesthetically designed sturdy construction ensures a long life against all weather condition, maintaining initial performances through the lifetime of the installation. Product offered asymmetrical light distribution.

Product Description

- Luminaire made of aluminium with non corrosive SS fasteners.
- Polycarbonate optical lens.
- Luminaire integrated with 100W LED.
- Suitable for mounting on 76mm / 88.9mm OD pipe, 72mm / 91mm square pipe.
- Extruded aluminium mounting pipe for easy installation onto the pole.
- Cable entries for through-wiring of mains supply cable.
- Integral constant current power supply
- CRI (Ra) : ≥ 70
- Prewired with LED driver and suitable for operating on 240V, 50Hz single phase ac supply.
- Ordering guide : KL-4447-CCT (Colour Temperature)
- Available CCT : 3000K, 4000K, 5700K



Product Benefits

- High luminous efficiency at reduced wattage.
- Elegance, Functionality.
- Environmental friendly, moisture proof, insect free.
- Low maintenance cost.
- Sustainable LED technology offers durability and optimal light output with low power consumption.

Area of Application

Illuminating parks, Gardens, Commercial complex, Smaller Roadways, Private driveways, Pathways in Residential buildings & office complex.

Available Finish

- Pure polyester powder coated
- Graphite grey
 - Anthracite grey
 - Jet black





Technical Specifications

General

ID : 4447
 System Wattage : 100W LED
 Driver Integral : Constant Current
 Input Voltage : 230-240Vac
 Frequency : 50-60Hz
 Operating Voltage : 110-300Vac
 Operating Temperature : -15°C~+50°C

Physical

Body : Aluminium
 Diffuser : Polycarbonate Optical Lens
 Mounting : Suitable for mounting on
 Ø76 / Ø88.9 / □72 / □91
 Finish : Powder Coated
 Graphite Grey / Jet Black
 Anthracite Grey

Light Source

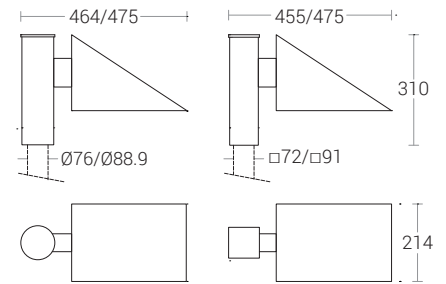
Light Source : LUMILEDS / OSRAM
 CRI (Ra) : ≥70
 LED Colour Temperature : 3000K / 4000K / 5700K

Driver

Power Supply : Integral
 Power Factor : >0.95
 THD : <10%
 Surge Protection : 6KV
 Efficiency : >88%

Optical Performance

Light Distribution : Type III



Note : It is our constant endeavor to upgrade the performance of our products. For the latest technical information, IES files and product updates please refer to the website at www.klite.in

"Dual Navira" pathway luminaire, is an innovative design options to provide visual integration with the environment. Aesthetically designed sturdy construction ensures a long life against all weather condition, maintaining initial performances through the lifetime of the installation. Product offered asymmetrical light distribution.

Product Description

- Luminaire made of aluminium with non corrosive SS fasteners.
- Polycarbonate optical lens.
- Luminaire integrated with 200W LED.
- Suitable for mounting on 76mm / 88.9mm OD pipe, 72mm / 91mm square pipe.
- Extruded aluminium mounting pipe for easy installation onto the pole.
- Cable entries for through-wiring of mains supply cable.
- Integral constant current power supply
- CRI (Ra) : ≥ 70
- Prewired with LED driver and suitable for operating on 240V, 50Hz single phase ac supply.
- Ordering guide : KL-4448-CCT (Colour Temperature)
- Available CCT : 3000K, 4000K, 5700K



Product Benefits

- High luminous efficiency at reduced wattage.
- Elegance, Functionality.
- Environmental friendly, moisture proof, insect free.
- Low maintenance cost.
- Sustainable LED technology offers durability and optimal light output with low power consumption.

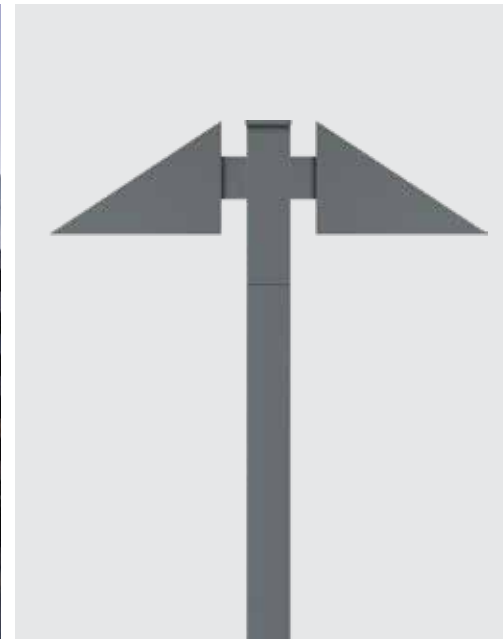
Area of Application

Illuminating parks, Gardens, Commercial complex, Smaller Roadways, Private driveways, Pathways in Residential buildings & office complex.

Available Finish

- Pure polyester powder coated
- Graphite grey
 - Anthracite grey
 - Jet black





Technical Specifications

General

ID : 4448
 System Wattage : 200W LED
 Driver Integral : Constant Current
 Input Voltage : 230-240Vac
 Frequency : 50-60Hz
 Operating Voltage : 110-300Vac
 Operating Temperature : -15°C~+50°C

Physical

Body : Aluminium
 Diffuser : Polycarbonate Optical Lens
 Mounting : Suitable for mounting on
 Ø76 / Ø88.9 / □72 / □91
 Finish : Powder Coated
 Graphite Grey / Jet Black
 Anthracite Grey

Light Source

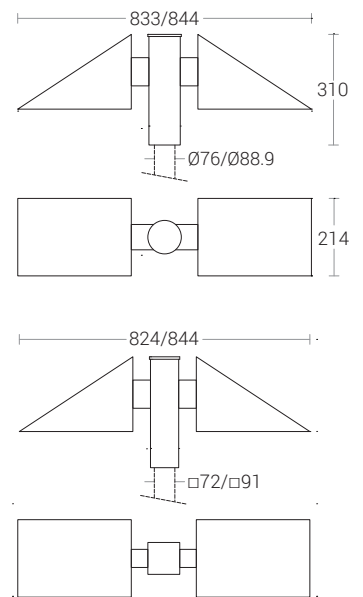
Light Source : LUMILEDS / OSRAM
 CRI (Ra) : ≥70
 LED Colour Temperature : 3000K / 4000K / 5700K

Driver

Power Supply : Integral
 Power Factor : >0.95
 THD : <10%
 Surge Protection : 6KV
 Efficiency : >88%

Optical Performance

Light Distribution : Type III



Note : It is our constant endeavor to upgrade the performance of our products. For the latest technical information, IES files and product updates please refer to the website at www.klite.in